

- Have a question about Job's Daughters? Ask Mrs. Mick!
- Bethel Bits
- Do you need help planning Installation?
- Check out what happened at Jobie U!

INSIDE
THIS ISSUE:

Flying without wings 2

Getting to know your GG 2

Flags & Medallions 2

Faternal Relations Committee 2-3

Grand Guide Fundraiser 3

Bethel Bits 3

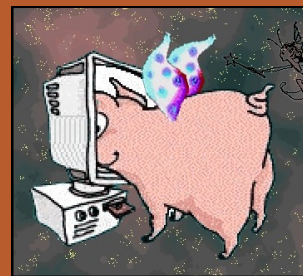
Planning your Installation 3

Ask Mrs. Mick 4

Electing your Line Officers 4

Jobie News

VOLUME 1 ISSUE 2



OCTOBER, 2007

Jobie U Rocked!

Jobie U 2007 was the biggest Jobie U ever held in South Dakota.

Nearly 100 girls and adults attended the weekend event September 14-16 at the Buryanek Lodge near Platte, SD.

The weekend focused on learning and having fun.

Specialized classes were held for each of the classes.

PGG Cyndy DeMers lead a general workshop on setting goals that made everyone wonder if they were triangles, squares — but the group was overwhelmingly full of squiggles!

In a workshop lead by GG Deanna White, we were reminded that it is OK to disagree with each other, but that there are things that we can do to get along and play nice with each other.

For many who attended, the highlight was the "Candle on the fish cleaning station" ceremony on Saturday night. Originally called the "Candle on the water" ceremony, South Dakota wind forced us to adapt. Everyone was given a candle which we lit from each

tirely clear who really won — but everyone had a lot of fun showing off their knowledge of Job's Daughters.

A special program was presented to gather input about potential changes to Grand Session. Several

ideas were discussed — including shortening the weekend, holding it at a different venue than a hotel, moving the pageant and possibly other activities to Jobie U. No decisions were

made, but lots of good questions and discussion.

Thank you to everyone who attended, to the teachers who led each class, and to the kitchen crew who worked so hard to keep everyone fed!



The Record Breaking Crowd at Jobie U 2007

other and placed in a wooden cross that was designed to float on the water as we sang a variety of songs.

Perhaps the most interesting spectacle to watch was the grudge match of Jobie Trivia between girls and adults — it still isn't en-

A Word from the Grand Librarian

By Carrie Lax
Grand Librarian 2007-2008

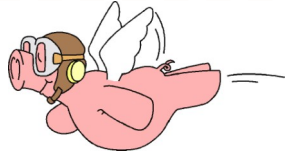
Hey girls, I thought I'd share one of my favorite poems with you and hopefully it will get your creative juices flowing.

Don't forget that you can start writing poems, essays and short

stories for the Librarian's Contest anytime. I'm also in charge of the Ritual Knowledge Test, so if anyone is interested in taking it, let me know and I'll get you a copy.

Grand Librarian, Carrie

Listen to the Mustn'ts
by Shel Silverstein
Listen to the MUSTN'TS, child,
Listen to the DON'TS
Listen to the SHOULDN'TS
The IMPOSSIBLES, the WON'TS
Listen to the NEVER HAVES
Then listen close to me—
Anything can happen, child,
ANYTHING can be.



Flying without wings...

By Deanna White, PHQ
Grand Guardian 2007-2008

In recent weeks I have been blown away by the Job's Daughters of South Dakota. Not only did a record number of you show up for Jobie U to impress me with your commitment and enthusiasm, but as we have visited Bethels around the state you have continued to impress me with your dedication to Job's Daughters. I have been fortunate to hold 5 official visits so far and each one has left me with special

memories.

Let me say a word about our Honored Queens — they are an awe-inspiring group of young ladies. In today's world, leadership is a virtue that is recognized and appreciated — and it is a quality that can be difficult to find. Our Honored Queens will never have to worry about lacking that quality. These young ladies put so much in to making their Bethel a success.

A good leader can be many things. In Job's Daughters, she

is kind, organized, smart, thoughtful, and possesses the ability to plan events and meetings and preside with grace. Most importantly, she has patience and a great sense of humor. All of our girls possess this potential — I am grateful that Job's Daughters is able to help them build on those qualities and develop the skills of a great leader. To all of you future Honored Queens — I can't wait to see what new and exciting things you bring to your Bethel!

Deanna White can be
contacted at

(605)310-3808

Or by email

flyingpigsinsd@hotmail.com



Getting to know your Grand Guide

By Angela Willis
Grand Guide 2007-2008

My life in Job's Daughters started when I was 11 yrs old when I was initiated into Bethel #10 of Pierre. I am a Past Supreme Bethel Honored Queen, Past Honored Queen and Majority Member of #10. Four years ago, I moved to Sioux Falls where I joined the

Council of Bethel #17. I currently am in my third year as their Bethel Guardian. This year I also have the honor of being the Grand Deputy to the Vermillion Bethel.

I love being in Job's Daughters and working with everyone at the local and state level. It is very rewarding to me to see how this organization affects each and everyone of us.

I have seen girls grow into amazing young and use what they learned in Jobs Daughters to be successful.

This organization has given me a lot of rewarding opportunities and experiences. I hope that I am able to pay back just a fraction and help someone else experience what it means to be in Jobs Daughters.

UPDATE FROM FLAGS AND MEDALLIONS COMMITTEE

By Barb Dunham
Flags & Medallions Chair

By now, most of you should have your lists of Bethels in the jurisdiction you are a rep to. That means that you've all sent out your letters and started on your scrap books! Yay!!! I'm looking forward to seeing the books that you put together for next year at Grand. If you have an email address, some of the girls can sent pictures and info to you that way. It would be much easier and cost effective

for the girls who are reps to places like Brazil and the Philippines. Believe it or not, there is still a couple glitches on this end of this project. If you haven't gotten a letter from me yet, please contact me at flagsnmedallionsinsd@yahoo.com, call 605-310-6302 or snail mail me at Barb Dunham 212 S Cherry St, Lennox, SD 57039.

Can anyone out there guess which jurisdiction has had the most growth in the past year? Look for the answer next time!
Jobie Love, Barb

MEET YOUR FRATERNAL RELATIONS COMMITTEE

The Fraternal Relations Committee members were in attendance at the 2007 Jobie U event. Background information was provided about the origins of the Masonic fraternity. Packets of brochures (OES, DeMolay, York Rite, etc.) on appendant Masonic bodies were available. If you are interested, and did not pick one up let us know and one will be mailed to your Bethel. We hope your Bethel would make a visit to your local Masonic Lodge.

Cont. page 3



Bethel Bits

Grand Outer Guard Merritt Hosley and Grand Chaplain Katrina Dunham are Engaged from Bethel I !!!

What is your Bethel up to??? Did you hold a fundraiser? Initiate a new member or 5? Come up with a great promotional activity? Did someone in your Bethel win an award?? Tell us about it! We are looking for news from each of the Bethels this year — **so submit those articles to editor Angela Willis at angmwil77@yahoo.com**

Information and pictures will be included as space is available.

Cont'd from Page 2

The Masons would be thrilled to have you come and make a short presentation. If you go to the iojd.org website, click on Leadership training, then the Reference Manual, and the Masonic Speech – there you will find a great outline for a short talk to Masons. Should you not know the names of the officers of your local Masonic Lodge, you may call the toll free number of the SD Masonic Grand Lodge at 1-(800) 462-7661 and that information will be available to you. (In the Sioux Falls area call 332-2051) Fraternal Relations committee members will be happy to work with you on any Masonry related question or concern you may have. The members are: Sandy Vanneman, PGG Chr, Don Salmon, PGM, Dick Lester, Richard McCauley, and Margot Burton, PGG. Their telephone numbers and addresses are provided in the GGC 2007-2008 Directory. Sandy Vanneman, PGG - Chr

GRAND GUIDE FUNDRAISER

Selling of the Butter braids has come to a close. I want to thank all the Bethels that worked so hard at selling the braids. They seem to have gone over very well. They will be delivered the weekend of November 17th. I will be contacting the Guardians to make delivery arrangements and perhaps be asking other people's assistance in delivering them to various parts of the state.

I ask that all Bethel's please get their monies into me as soon as possible.

I will post the final sales and profits in the next new letter.

THANKS AGAIN EVERYONE FOR ALL YOUR HARD WORK!!!!!!!!!!

Grand Guide,
Angela Willis

Planning your Installation

For most girls, being elected Honored Queen is not a big surprise. You have worked hard on your way up the line to show your Bethel members that you have the skills, attitude and dedication to become an Honored Queen. But no matter how much notice you have had, it is still an exciting thing to have your sisters recognize you as the one they want to lead them for the coming term.

Your installation is only one part of your term (we will address the other things you should be planning in later articles), but it is likely the one thing that you will still remember years later. So start planning early!

Each Bethel has it's own customs for installations, but here are some basic things to plan for:

- When are you going to have the ceremony? Don't forget to get on the schedule early to get the date you want. Deciding what time you want the ceremony to begin can dictate decisions about your reception.
- When are you holding your practice? Be sure to let your officers and installing officers know. Who will run the practice?
- Which ceremony do you want to use? There are a variety of ceremonies — you should choose the one that is meaningful to you. Talk with your Director of Epochs or Guardian to find out what is available. And don't forget to select your

special music. You may want something special played as you and your officers enter, and most Honored Queen's will have a special song played or sung while they are at the altar.

- If you want someone special to read your ceremony or to provide special music, ask them early and confirm with them as the date gets closer.
- What are your colors, flower, emblem, etc.? How do you want to incorporate them into your installation? Into the rest of your term? Do you want a carrying piece for your officers? Special decorations?
- Who are going to be your installing officers? Remember, with the exception of the musician, they must be a Past Honored Queen.
- Are you having a reception? What food will you serve? Do you need members of the Bethel to bring anything? Do you have people to help set it up and serve? How do you want to decorate the room?
- Check with the current Honored Queen about her retiring ceremony before you get any invitations printed.
- Invitations. You will want to have enough to send to your family and friends and to the local Masonic Bodies. You may want to ask your officers if they would like any to send to special guests. Some Bethels

will also invite Job's Daughters Grand Officers who live in the area. Check with your Guardian for a list.

- Don't forget to get your invitations out early— remember your local Masonic Bodies will only meet once a month, so get it out in time for them to read it at one of their meetings.
- Most Bethels will provide a program for those attending. There is no set format, but they typically include a list of installing officers, Bethel Officers and a short outline of the program. Many will also include a list of Council, information about their emblem, scripture, etc. and a thank you to those who help support you.
- Budget. This is one of the most difficult things to think about. Make sure that you understand what expenses (if any) are covered by the Bethel. Expenses not covered by them are the responsibility of the Honored Queen and her family. This can include your carrying pieces, invitations and programs, decorations, reception food and drink. So make sure that you keep that in mind and that you are working with the Council and your family.

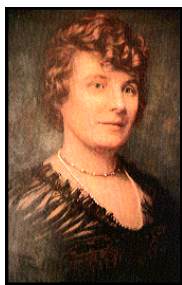
Regardless of what you choose for your installation, remember that your Guardian Council must approve it all IN ADVANCE. Don't be afraid to ask for help — everyone wants you to enjoy your special day.

Ask Mrs. Mick

Dear Mrs. Mick,
I have always wondered.....

If there is a question about Job's Daughters that you have always wondered about — particularly about the Ritual, music or ceremonies — this is your chance to ask!!!

You can submit question for Mrs. Mick by email to angmwil77@yahoo.com — then watch for the answers in upcoming editions of this newsletter!!!



Calendar of Events

October

- 24 — Supreme Visit — 7pm at the Sioux Falls Masonic Center
 - 26 — 9:30am OV with Bethel 19, Hot Springs
1:30pm OV with Bethel 12, Sturgis
Bethel 44 Rapid City — Halloween Party
Bethel 10 Pierre — Pierre Bash
 - 27 — 1:30pm OV with Bethel 4 Deadwood
- DEADLINE FOR BUTTER BRAID ORDERS

November

- 17 — Official Visits and Decorate the Capitol Christmas Tree

December

- 1 — Deadline for December Newsletter

January

- 26 — Grand Council Retreat for all adults — Chamberlain

Does your Bethel Have an event you would like included? Just send it in!

REMINDER

Session Sales will be available at Official Visits — and don't forget the GBHQ & Miss SDJD sales items as well!!

- Flying Pig Shirts
- Jobie Bags
- Vneck Jobie Shirts
- Water Bottles
- Pins & Charms
- Raffle Tickets

Check the website for descriptions and prices!



Visit www.sdjd.org

A TIP: Electing Your Line Officers

Job's Daughters is a girls leadership organization. We elect our Honored Queen and other line officers (Senior Princess, Junior Princess, Guide and Marshal) each term. Electing her own leaders is one of the biggest privileges a Job's Daughter can enjoy.

Elections typically happen at the second meeting in November and April to allow the newly elected Honored Queen time to plan her installation and her term. In South Dakota, Job's Daughters vote by secret ballot without nomination.

What in the world does that mean? It means that no one stands up to say that they want an office, no one nominates a candidate for office. The list of eligible members is presented and you make your choice by writing the name of the person you want on your ballot. No one knows who you vote for — so it is called a secret ballot.

Because we choose to hold our elections this way, there are specific rules that must be followed to make sure that each election is fair to everyone.

1. There are requirements to be eligible to

be elected to office. These are spelled out in the bylaws and typically require that you have passed the proficiency test, your dues are paid, you have been a member



for at least 1 full term, and you have had good attendance. In most Bethels, if you have any unexcused absences from a meeting, you are not eligible for election. The

Bethel Guardian Council should present the list of the girls who meet the requirements. If you have any question about the eligibility of a member, you should talk to the Guardian BEFORE the election begins. Some Bethels also require that your parents sign a permission form before you are eligible for election.

2. Every member of the Bethel who is present and has their dues paid may vote. If you are not present, you may still be eligible to be elected, but you can't vote.
3. If you are unable to attend the election

meeting, but are still interested in being elected to an office, talk to your Bethel Guardian BEFORE the meeting. Most Bethels will allow you to give the Guardian a note accepting an office.

4. We do not campaign for election in Job's Daughters. We don't talk about who to vote for or tell anyone who we think they should vote for. There are no signs, buttons, or speeches. You are elected based on the belief of the members that you will make a good leader for the Bethel.
5. There is NO TALKING during elections.

For more information on the procedures for elections, check out your SDJD Handbook.

Remember, the most important part of elections is voting for the person that you believe will make the best leader for your Bethel. Think about their commitment to Job's Daughters, their attendance at Bethel events, their leadership ability, and what they will be like when they are leading the Bethel. This is not a popularity contest — but a vote of confidence in the leadership skills and potential of your Bethel Members.